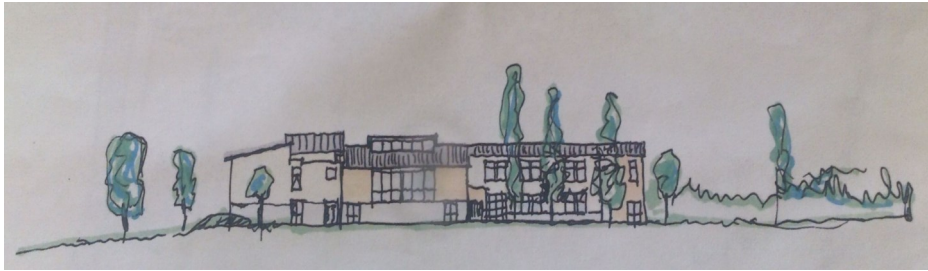


# Kildalkey N.S. Newsletter



Artist's impression of the front of the new school

Date:  
May 2014

## Info on New School

**Why does Kildalkey need a new school ?**  
Back in 2007 Architects from the Dept. of Education came down to look at Kildalkey school and determined, having considered all options that the best solution would be to build a new school on a greenfield site.



Artist's impression of design of new school

The following newsletter details some of the information on the proposed new school and why it is needed.

## Why did they choose this option?

In 2008 when the downturn in the economy came the BOM asked the Dept. to re-consider building on the current site. Their technical team gave this some consideration but again decided against the current site for several reasons - sewerage , electrical supply, leaky roofs, poor levels of insulation, inadequate broadband, lack of parking for parents and school staff and lack of suitable play areas for pupils. (Meath Co. Council have looked for extra parking even for pre- fabs. With them parking is a priority.) including cost to the Dept. So going to the green field site provided by St. Finian's Diocesan Trust was back on the agenda again. To date significant progress has been made. The consultants have been appointed (Architect, Civil and mech. Engineers, quantity surveyor etc.) and have completed a large part of their work. The Planning Application has been submitted. At present we are awaiting the decision of the Planning office and following a positive decision, we will hopefully progress to tendering for the building of the new school.

# What Advantages Would a New School Bring?



## Energy Efficient

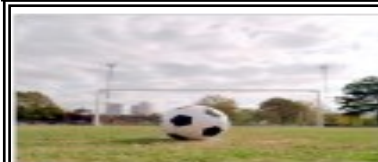
The new school design is very **energy efficient** with high levels of **solar gain** and **insulation** as well as **rainwater harvesting** and energy saving devices. A significant number of **bus and car parking areas** would be provided in the new school design.

Its modern layout **has brighter, warmer classrooms, bigger corridors and more playing areas including a large indoor hall.**



## One School Area

Pupils could all be together in **one premises**, instead of two separate premises, which is currently the case.



Better **hard court and pitch facilities.**

## Better Equipment

Modern **classroom equipment** in each class including interactive **white-board** and **wired-broadband.**

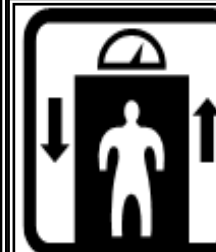


## New Classrooms

The new school would provide **12 new classrooms** as well as **learning support rooms.** This is badly needed because of increasing pupil numbers. There are 39 new Junior Infants starting in Sept 2014!



A **Large P.E. Hall** as part of the new school which could be used for P.E. concerts, assemblies and meetings.



## Lift Access

An **elevator/lift** for access to the second floor for persons who have difficulty with stairs.



## Parking

The new school would facilitate the provision of **more parking spaces.** There will be a drop zone for parents to pull into as well as **bus parking** and a bigger **staff parking** area.



## Better Value for Money

The new school would represent better **value for money** than attempting to upgrade current facilities and rehouse pupils during building work.



## How Can I Help?

Please use the forthcoming election to highlight the need for a new school in Kildalkey!

